

DRUG MUSEUM

Type & quality of collection in the museum

A pharmaceutical drug museum consisting different dosage forms was developed with special attention and displayed the products in a designated place, visible to everyone. A regular cleaning schedule is followed and the products were updated with latest formulations in the market. The museum is managed by two faculty members and two students from each year by coordination with housekeeping staff. Museum is composed of marketed and student's formulations which have been broadly classified as medicated, surgical and cosmetic formulations. A museum displaying crude drugs in entire form and powder form is available in Pharmacognosy lab and a museum consisting of various organ models and charts is figured out in Pharmacology lab.

PHARMACEUTICS MUSEUM	
Tablets	Chewable tablets, Dispersible tablets, Prolonged Release tablets, Film coated tablets, Sustained release tablets, Extended-release tablets
Capsules	Hard gelatin capsules, Hard gelatin gastro resistant capsules, Hard gelatin Enteric coated sustained release capsules, soft gelatin capsules, Nutraceuticals.
Powders	Bulk powder, Dusting powder, Effervescent powder.
Syrups	Anti pyretics, Decongestants, Iron Syrups, Multi vitamin syrups.
Suspensions	Antacids
Emulsions	Laxatives
Sterile preparations	Eye preparations, Ear preparations, Injections, Infusions.
Ointments	Anti-fungal, Burns
Gels	Clindamycin gel, Metronidazole gel and Volatren
Lotions	Moisturizing lotions
Suppositories	Vaginal preparations
Inhalations	Albuterol sulphate inhalation, Salbutamol inhalation
Surgical dressings	Cotton, gauze cloth, band aid
Syringes of different sizes	0.5ml, 1ml, 3ml, 5ml, 10 ml
Cosmetics	Soaps, powders, shampoos, lipstick

DRUG MUSEUM

Baby care products	Baby soap, Baby oil, Baby shampoo, Baby powder and Baby lotion.
Products prepared by our students.	Tablets, suspensions, emulsions, sterile formulations etc



Pharmaceutics Museum

PHARMACOGNOSY MUSEUM		
Crude drugs in entire form	<ol style="list-style-type: none"> 1. Ajowan 2. Areca Nut 3. Benzoin 4. Caraway Fruit 5. Cardamom 6. Cascara Bark 7. Cinchona Bark 8. Cinnamon Bark 9. Clove 10. Coriander Fruit 	<ol style="list-style-type: none"> 11. Dill Fruit 12. Ephedra Stem 13. Fennel Fruit 14. Gokharu 15. Linseed 16. Nuxvomica Seed 17. Pyrethrum Flower 18. Quassia Wood 19. Quillaia Bark
Crude drugs in powder form	<ol style="list-style-type: none"> 1. Aconite Root 2. Aloe Powder 3. Anise Seed 4. Areca Seed 5. Ashoka Bark 6. Belladonna Root 7. Capsicum Fruit 8. Caraway Fruit 9. Cardamom fruit 10. Cinchona Bark 11. Cinnamon Bark 12. Clove Flower 13. Coffee Seed 14. Colchicum Seed 15. Coriander Fruit 16. Datura Leaf 17. Digitalis Leaf 	<ol style="list-style-type: none"> 20. Gentian Root 21. Hyosymus Leaf 22. Isapghol Seed 23. Kurchi Bark 24. Mentha Leaf 25. Nuxvomica Seed 26. Potato Starch 27. Quillaia Bark 28. Rauwolfia Root 29. Rhubarb Rhizome 30. Rice Starch 31. Sandal Wood 32. Valerian Root 33. Vasaka Leaf 34. Wheat Starch 35. Wildchery Bark
Charts	<ol style="list-style-type: none"> 1) T.S of Vasaka leaf 2) T.S of Clove flower bud 3) T.S of Nux-Vomica seed 4) T.S of Senna leaf 5) T.S of Digitalis purpurea leaf 6) T.S of Wild cherry 	<ol style="list-style-type: none"> 11) T.S of Senna leaflet 12) T.S of Rawolfia root 13) T.S of Datura leaf 14) T.S of Ipecac root 15) T.S of Poppy 16) T.S of Ergot on rye

DRUG MUSEUM

- 7) T.S of Quassia
- 8) T.S of Ephedra stem
- 9) T.S of Cardamom seed
- 10) T.S of Cascara bark

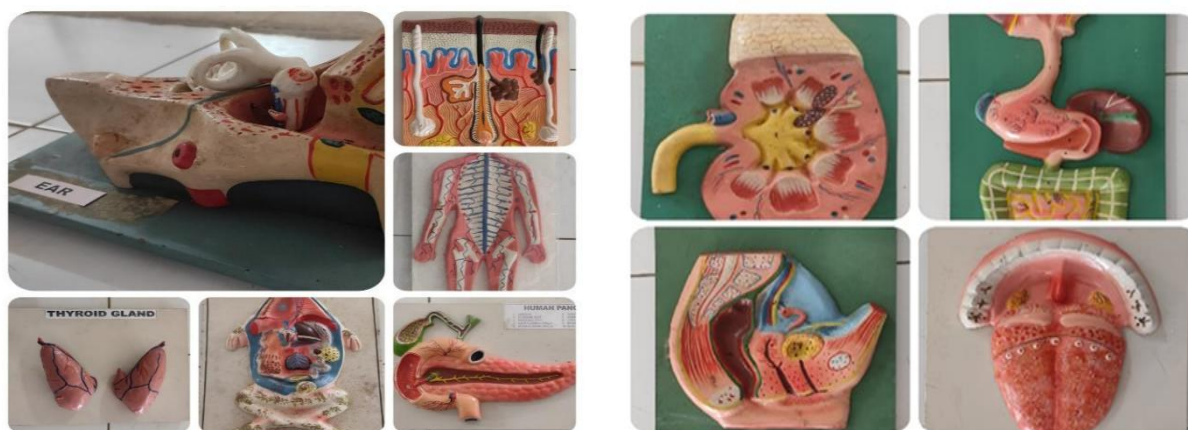
- 17) T.S of Coriander seed
- 18) T.S of Fennel seed



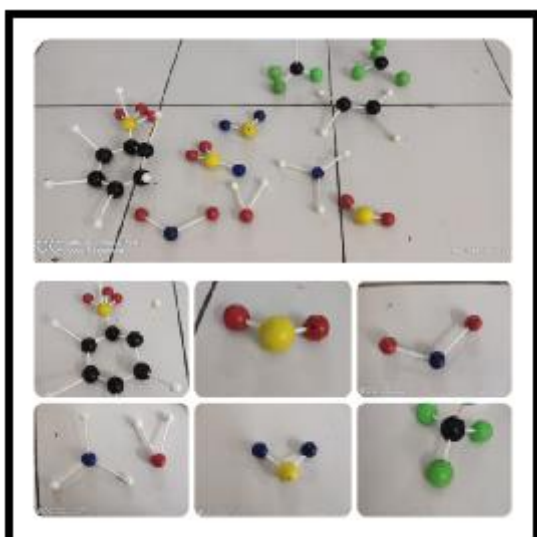
Pharmacognosy Museum

PHYSIOLOGY MUSEUM (Organ Models and Charts)

- | | |
|-------------------|--|
| 1. Human Skeleton | 11. Teeth anatomy |
| 2. Brain | 12. Thyroid gland |
| 3. Heart | 13. Frog dissection |
| 4. Eye | 14. Nervous systemUrinary system |
| 5. Ear | 15. Teeth anatomy and dental |
| 6. Nose | 16. Human digestive system |
| 7. Liver | 17. Lymphatic System |
| 8. Pancreas | 18. Human reproductive organs (Male) |
| 9. Kidney | 19. Human Respiratory System |
| 10. Skin | 20. Human reproductive organs (Female) |



Physiology Models



Chemistry Models



Charts of Physiology and Pharmacognosy